

Mr. Aitken

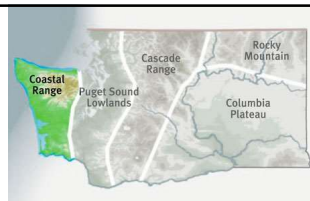
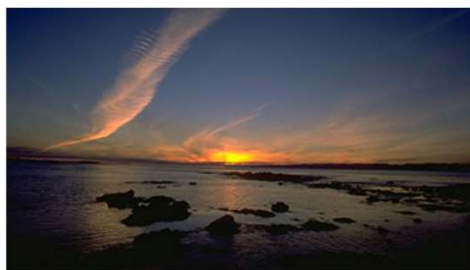
Washington State History

- 5 Regions of Washington State

Regions of Washington



Coastal Range:



Coastal Range:



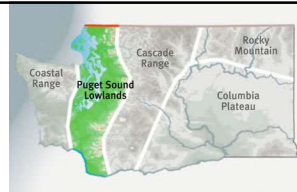
Coastal Range:

- **Physical Features:**
 - Elevation from sea level to 8,000 ft.
- **Climate:**
 - Mild and moist climate supports dense rainforest and lush vegetation.
 - Temperatures: winter 35°-55°, summer 55°-75°.
 - Precipitation: west side 180"+ per year, east side ~40" per year.

Coastal Range:

- **Population:**
 - Sparsely populated.
- **Economic Activity:**
 - Tourism, fishing, forestry, farming.

Puget Sound Lowlands:



Puget Sound Lowlands:



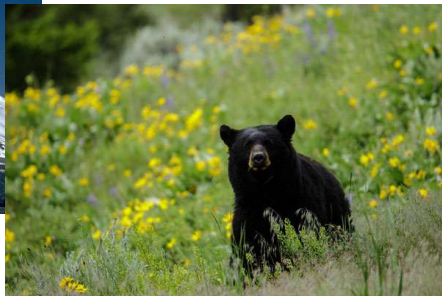
Puget Sound Lowlands:

- **Physical Features:**
 - Hilly, river valleys, flood plains, evergreen forests.
- **Climate:**
 - Temperatures: winter 35°-55°, summer 65°-85°.
 - Average 40" rain per year.

Puget Sound Lowlands:

- **Population:**
 - Most of Washington's population lives in this region.
 - 4,000,000+ people, and growing.
- **Economic Activity:**
 - High tech, aerospace, manufacturing, shipping ports, farming, tourism, forestry, transportation equipment.

Cascade Range:



Cascade Range:



Cascade Range:

- **Physical Features:**

- Physical barrier to climate and transportation
- Elevation: 4,000'-14,000'+.
Highest peak: Mt. Rainier, 14,411' above sea level.
- 5 active volcanoes.

Cascade Range:

- **Climate:**

- West side: moist and mild; east side dry and extreme climate.
- Precipitation: west side, 100"+; east side, less than 20".
- Mt. Baker holds world record for most snowfall: 1,140" (95') during 1998/1999 snow season.

Cascade Range:

- **Population:**

- Sparsely populated.
- Most land is government owned: parks, wilderness areas, forests.

- **Economic Activity:**

- Tourism, logging, mining.

Columbia Plateau:



Columbia Plateau:



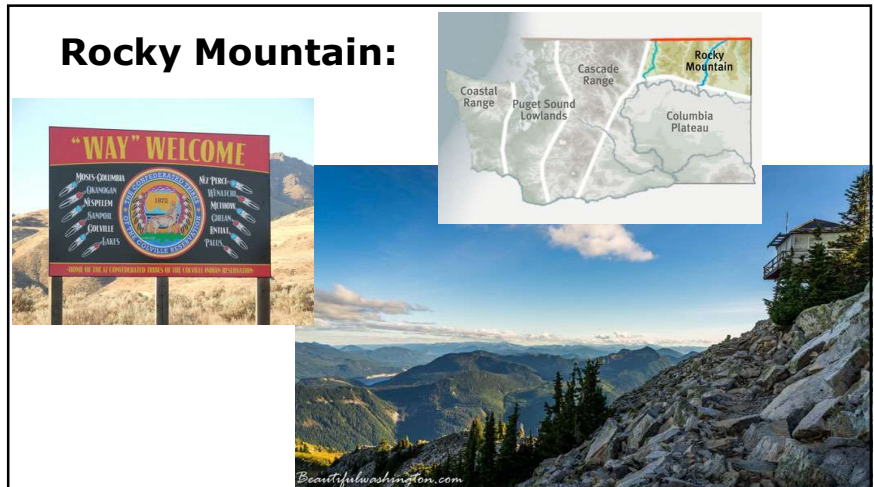
Columbia Plateau:

- **Physical Features:**
 - Relatively level, higher elevation.
 - Grassland, prairies, pine trees.
- **Climate:**
 - Hot, sunny summers with temperatures 100°+, cold winters with temperatures below 0°.
 - Precipitation: less than 20".

Columbia Plateau:

- **Population:**
 - Sparsely populated.
 - Yakima Indian Reservation.
- **Economic Activity:**
 - Agriculture (farming), hydroelectric power (dams), aluminum smelting, nuclear power, recreation & tourism.

Rocky Mountain:





Rocky Mountain:

- **Physical Features:**
 - Rugged and isolated.
 - Foothills of Rocky Mountain range (up to 7,000' in WA, rising to 14,400'+ in other states).
 - Grasslands and forest.
- **Climate:**
 - Harsh climates. Temperatures depend on elevation.

Rocky Mountain:

- **Population:**
 - Sparsely populated.
 - Colville Indian Reservation. (largest in the state).
- **Economic Activity:**
 - Ranching (cattle, sheep), tourism, hunting.